

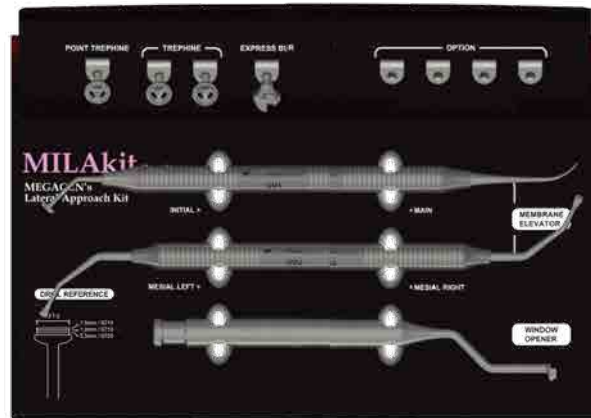
II. Lateral approach MILA kit™

(MegaGen Implant Lateral Approach Kit)

Ref.C

KLSCN3000

➔ MILA kit Components



Point Trephine Bur

Diameter (In / Out)	Length (mm)	Ref.C
Ø6.5 / Ø7.5	0.5	TLSTBU6705



Lateral Trephine Bur

Diameter (In / Out)	Length (mm)	Ref.C
Ø6.5 / Ø7.5	1	TLSTBU6710
Ø6.5 / Ø7.5	1.5	TLSTBU6715



Window Opener

Diameter (In / Out)	Length (mm)	Ref.C
Ø6.5 / Ø7.5	1.7	TLSWO6715



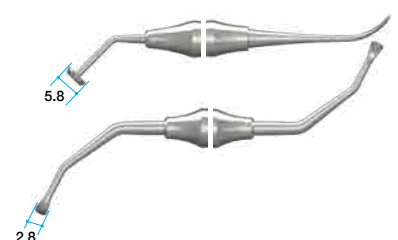
Express Bur

Diameter	Length (mm)	Ref.C
Ø7.0	2/4/5/6/8/10 Marking	EB70



Membrane Elevator

Diameter	Length (mm)	Ref.C
Ø5.8	-	TLSME001
2.8	-	TLSME002



►► How to use Lateral approach

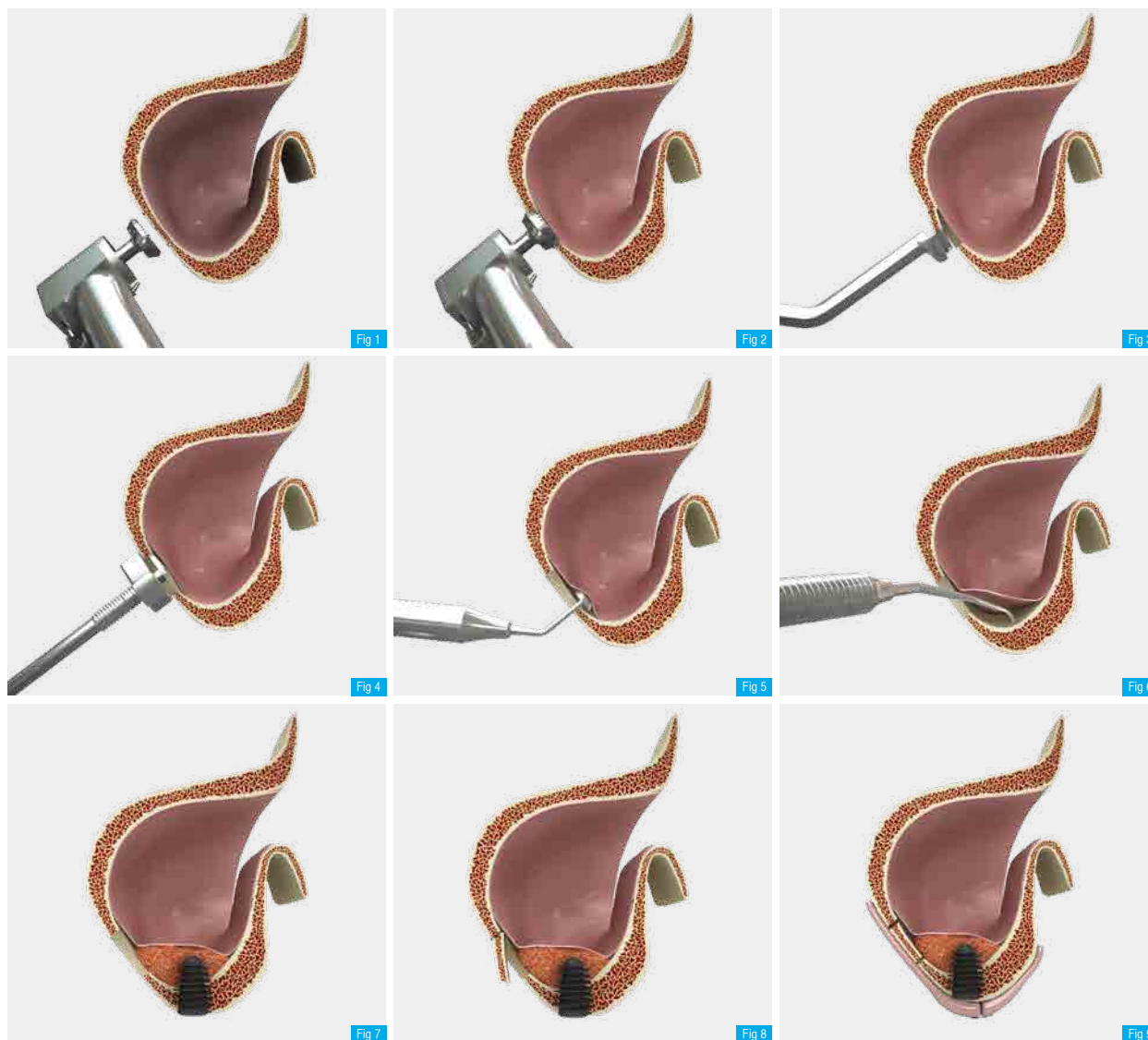


Fig 1. Using the Point Trephine Bur to identify the position and drill accurately

Fig 2. Choose Trephine depending on the thickness of the remaining bone and drill again over the hole made by Point Trephine Bur

Fig 3. Use Window Opener to fracture and remove the window wall.

Fig 4. Completely remove the remaining window wall with Express Bur

Fig 5. Use Membrane Elevator 001 through the hole to perform the first membrane lift through the hole.

Fig 6. Use Membrane Elevator 002 to elevate the membrane.

Fig 7. Graft with autogenous bone collected or alloplastic material. Place the fixture.

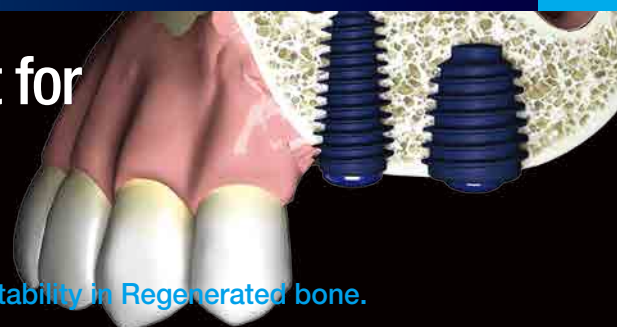
Fig 8. Close with the window wall.

Fig 9. Suture

OVER
10
YEARS
The AnyRidge Way
IMPLANT PARADIGM SHIFT SINCE 2009

AnyRidge is Perfect for Sinus lift with MICA & MILA Kit

AnyRidge Knife thread has perfect stability in Regenerated bone.
Incredible stability even in only 3mm of bone height!



NEW Express Bur

- Combined function of Diamond Drill and Reamer Drill.
- The smooth surface makes cleaning easy and leaves no residue after cleaning.
- Stopper provides safe drilling without damaging a membrane even when visibility is poor.

ASBE Trephine Bur with Stopper!

- Drilling to your desired depth.

Window opener that opens like magic!

- There is no additional cost for using Membrane after Grafting.



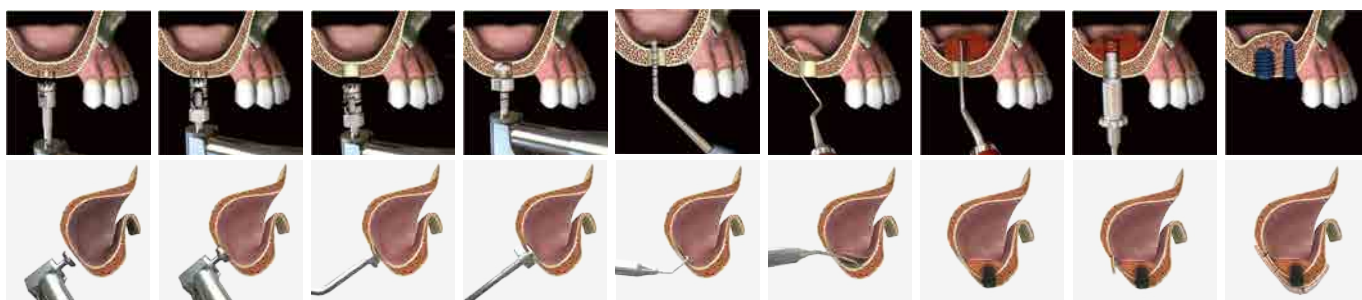
Crestal approach
MICA kit™
(MegaGen Implant Crestal Approach Kit)

Non-blind crestal sinus lift

Lateral approach
MILA kit™
(MegaGen Implant Lateral Approach Kit)

3-step lateral window, preserving bone

Simplified procedures for ideal sinus lift either laterally or crestal approach.



Have you made the PARADIGM SHIFT yet?

Do it the AnyRidge Way

Excellent primary stability with Knifethread®

- For smooth insertion & stronger primary stability
- No cutting edge for minimal invasion
- Perfect results with any bone condition

Excellent secondary stability with Xpeed®

- Faster & stronger osseointegration
- Surface technology incorporating Ca²⁺ ions on S-L-A treated surface
- 100% acid-residue-free surface



➡ Clinical Cases - Courtesy of Dr. Samuel Lee

Fig 1. Trephine Bur : Trephine with 1mm external stopper

Fig 2. Point Trephine Bur : Make an exact point to drill

Fig 3. Window Opener : Detach window wall

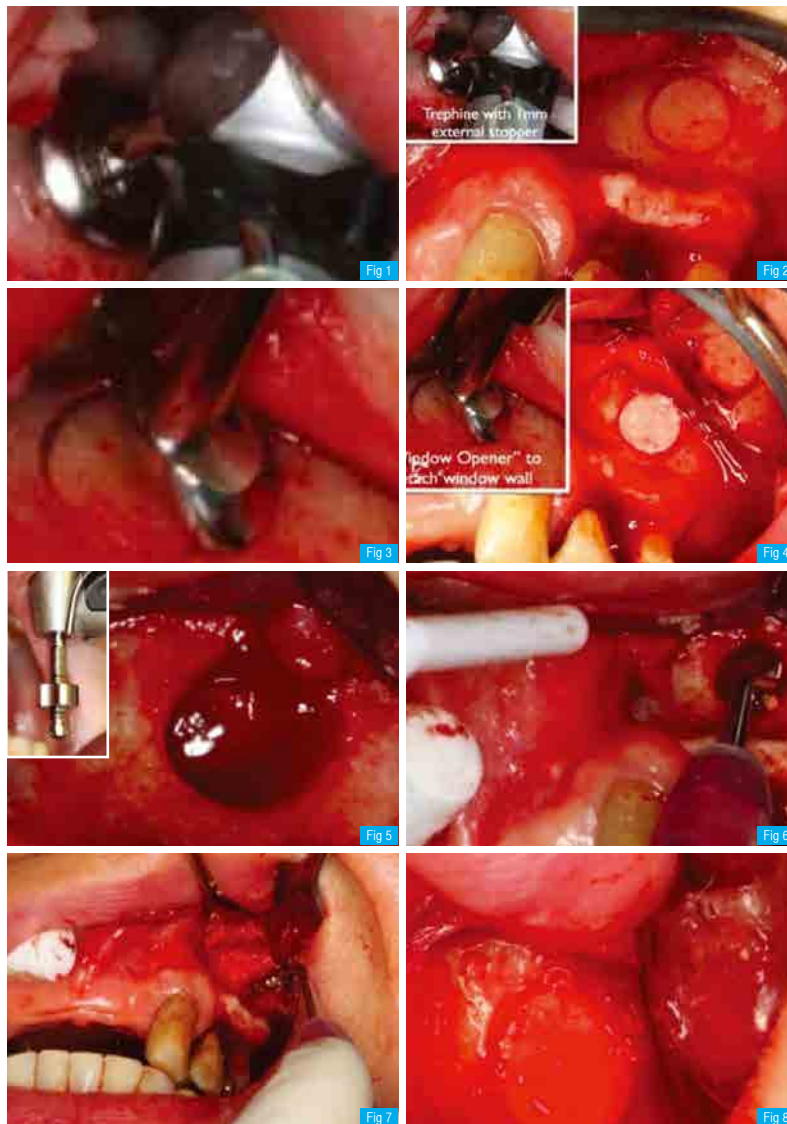
Fig 4. Window Opener : Remove the wall

Fig 5. Express Bur : Completely remove the remaining window wall

Fig 6. Elevator : Lift membrane

Fig 7. Graft : Autogenous bone collected or alloplastic material

Fig 8. Previously detached window wall was tapped into the position to prevent soft tissue migration into the sinus bone grafting



NEW PRODUCT

III. Sinus Combination Kit

Sinus Combination kit consists of components which enable both the sinus lateral approach technique and sinus crestal approach technique with one kit.

Type	Ref.C
Sinus Combination Kit	DTST-7110

- ➔ *Essential components for Sinus Lift & Elevation technique*
- ➔ *Convenience for users as the Sinus Combination Kit*



Sinus Combination Kit consists of

- | | |
|---|---|
| 01. Initial Drill: Ø1.8 Drill, Ø2.3 Drill [2EA] | 08. Lateral Stopper: 5EA |
| 02. Crestal Reamer: Ø2.8, Ø3.3, Ø3.8 [3EA] | 09. Lateral Reamer: Ø8.0, Ø6.5 / Ø8.0 |
| 03. Crestal Stopper: 8EA | 10. Lateral Core Drill: Ø7.0 |
| 04. Crestal Diamond Reamer: Ø2.8 | 11. Lateral Diamond Reamer: Ø6.5 / Ø8.0 |
| 05. Crestal Aqua Lift: Ø2.8 / Ø3.3 / Ø4.2 | 12. Lateral Side Drill: Ø3.0 |
| 06. Aqua Hand Adapter | 13. Lateral Diamond Core Reamer: Ø7.0 |
| 07. Depth Gauge | 14. Sinus Curette: 5EA |